

# News



A project on the ESFRI Roadmap for Research Infrastructures

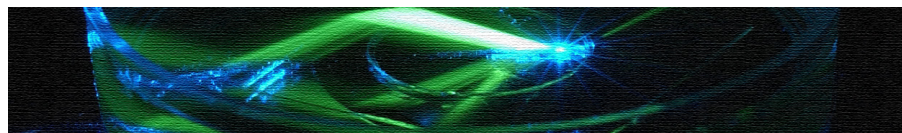
Issue 02 • December 2011

## Dear Reader,

some years ago, the European Scientific Forum for Research Infrastructures was launched by the European member states in order to gain an overview of the research infrastructure landscape in Europe. The outcome was the ESFRI roadmap, which changed the traditional concept of large-scale research infrastructure and introduced the idea of distributed infrastructures, with facilities located in different places. The 39 partners of the Euro-Bioimaging consortium adopted this model but there are still many open questions, which will determine what the Euro-Bioimaging research infrastructure of the future will look like. We truly believe that the only way to get answers is to take a bottom-up approach, asking the scientific community, the users, the technical staff running the facilities. What does a scientist, an MD, an industry partner or a funder expect from an imaging infrastructure? How large would the demand be in both the biological and the biomedical fields? Who can provide what and at which costs? These are only a few of the questions that both the Survey, launched a few months ago, and the Proof-of-Concept Studies, currently still running, are trying to answer. The results will provide clear indications to the Euro-Bioimaging stakeholders, governments and funders about the needs, demand and supply for imaging facilities in the scientific and medical community in Europe.

But this is not all. In these times of hard economical challenges it is necessary to cooperate and contribute to scientific and technological development by avoiding fragmentation and waste of resources, while still guaranteeing highest standards and first-class science. The Euro-Bioimaging partners are working on this aspect at the national level, organizing their imaging communities, each one with its own resources, timings and cultural heritage. In this issue, we asked the French imaging community to tell us their story. Needless to say, this will be only the first of a hopefully long series of success stories.

Enjoy the read!



## The French Bioimaging experience

We have interviewed Jean Salamero, head of the Cell and Tissue Imaging Core Facility-IBISA at Institut Curie in Paris, who introduced us to the French Bio-Imaging initiative.

One of the most important tasks of the Euro-Bioimaging consortium during the current preparatory phase is to encourage and promote the establishment of organized bioimaging communities in each European country. The level and nature of the organization and the way national initiatives are implemented strongly depends on the cohesion of each community and the level of support from governments. Among the numerous initiatives that are taking their first steps, French Bioimaging is one of the most advanced.

The French Bio-Imaging initiative, coordinated by Maité Coppey-Moisan (Institut Jacques Monod, University of Paris-Diderot) is a network of 9 bioimaging platforms distributed all over France, providing access to several advanced biological imaging technologies. French Bio-Imaging could build on the pre-existing IBISA platforms network", an initiative already supported by the French government since 2003 and which provides funding for technical staff at 18 bioimaging platforms in France. "Thanks to this experience, the French bioimaging community joined

the Euro-Bioimaging consortium with an established organization and could access the national funding programme for research infrastructures, receiving 26 millions Euros in funding", adds Salamero. This gave life to what we now know as French Bio-Imaging, which is structured along the Euro-Bioimaging principles of operation. Furthermore, another call for infrastructure funding was launched by the French government this year, and this may provide financial support to LIFE, the proposal of the French medical imaging community

Last but not least, training courses are organised by the CNRS through national networks (GDR grants) on a regular basis, providing the qualified personnel at the platforms with top-end technology training as well as specialized training for users. "Thanks to Euro-Bioimaging French Bio-Imaging will open its doors to scientists from all over Europe", says Salamero. A list of all national initiatives within Euro-Bioimaging can be found on our website, [www.eurobioimaging.eu](http://www.eurobioimaging.eu).

### Facts & Events

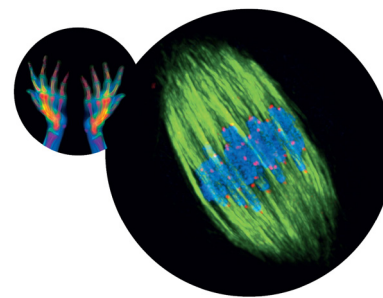
- Next **Stakeholders meeting**: 30-31 January 2012, Heidelberg, Germany. Registrations for stakeholders open till 20 January at [www.eurobioimaging.eu](http://www.eurobioimaging.eu)
- **Workshop** on Research Facility: 1 February 2012, Heidelberg, Germany  
Euro-Bioimaging meets the **Australian Microscopy & Microanalysis Society**
- The **ERA-Instruments brochure** on ALM was published last October  
[www.era-instruments.eu](http://www.era-instruments.eu)

Access • Service • Training

## Euro-Biolmaging Survey: a success beyond expectations

During the summer of 2011, Euro-Biolmaging conducted a detailed online European-wide survey of the imaging infrastructure landscape. The survey aimed to start to identify the needs and expectations of the potential users and to produce an inventory of the existing imaging facilities, their research and training activities. Facility providers and users, as well as funding agencies, were asked what they expect from a research infrastructure, thereby helping to define the requirements and properties of the potential node-facilities under the Euro-Biolmaging umbrella. More than 660 participants from 26 countries took part, a remarkable number considering the effort required to answer the many questions (over 50). This clearly indicates the interest the growing European imaging community has in the

European imaging research infrastructure concept proposed by Euro-Biolmaging. The survey, together with the proof of concept studies, is one of the stepping-stones paving the way to a fully functional Euro-Biolmaging transnational infrastructure. The results, which are currently being analyzed, will provide us with important information regarding the supply and demand for biological and medical imaging technologies and the necessary resources to run them. In addition, it will also help to define the best cost models and the capacity for external and transnational user access, as well as the supply and demand for training both in biological and biomedical imaging. Results will be published soon on the project website: [www.eurobioimaging.eu](http://www.eurobioimaging.eu).



For further information, please contact our Project Managers:

### Project Office – Advanced Light Microscopy

EMBL – European Molecular Biology Laboratory  
Meyerhofstraße 1, 69117 Heidelberg,  
Germany

Dr. Antje Keppler, Project Manager  
T +49 6221 387 8847 | [keppler@embl.de](mailto:keppler@embl.de)

Dr. Marzia Sidri, Project Assistant  
T +49 6221 387 8480 | [sidri@embl.de](mailto:sidri@embl.de)

### Project Office – Medical Imaging

EIBIR – European Institute for Biomedical Imaging  
Research

Neutorgasse 9A, 1010 Vienna, Austria  
Dr. Pamela Zolda, Project Manager  
T +43 5334064538 | [pzolda@eibir.org](mailto:pzolda@eibir.org)

## Euro-Biolmaging Proof-of-Concept Studies

63 imaging facilities open their doors to more than 150 visiting scientists

The call for proposals for the Proof-of-Concept Studies received a total of 228 user applications. These are being evaluated by a panel of experts and the selected researchers will have the possibility to carry out their project at one of over 63 different imaging facilities distributed throughout 17 different countries.

Selected projects will start from January 2012 and provide a scientifically, technologically and geographically rich sampling of sites and projects. These studies will test access protocols for Euro-Biolmaging imaging facilities, assess potential pitfalls in running these resources, and will be very useful to identify current community needs. The studies will identify potential bottlenecks in providing access to these technologies and will help define the criteria

for eligibility of future Euro-Biolmaging nodes.

A big 'thank you' goes to the 63 imaging facilities and their organizations, which offered to open their doors to scientists from all over Europe. Without their enthusiastic support and welcoming spirit, the Euro-Biolmaging Proof-of-Concept Studies would not have been possible and we would have missed out on an important tool for defining the future of Euro-Biolmaging infrastructure.

Now that we are starting the proposals evaluation, we are looking forward to discovering the results of this unprecedented European-wide experiment of open access to biological and medical imaging infrastructure. Learn more about this and the participating facilities on our website.

### New to Euro-Biolmaging?

Euro-Biolmaging is one of 13 Biological and Medical Sciences Projects included in the roadmap of the European Strategy Forum on Research Infrastructures (ESFRI).

Euro-Biolmaging is open to everyone interested.

For more information, please visit:

[www.eurobioimaging.eu](http://www.eurobioimaging.eu)

