



Dear Reader,

The Preparatory Phase is now coming to an end and with this the Euro-BioImaging Preparatory Phase Consortium will hand over their recommendation for the Euro-BioImaging infrastructure model to the interested European Member States, their representatives in ESFRI and the European Commission. To make these recommendations a reality is now a political task, that is being taken up by the group of national ministry and funding agency delegates assembled in the Euro-BioImaging Intergovernmental Working Group, which will steer the Euro-BioImaging concept to implementation and develop it further, where needed. Of course, the Euro-BioImaging team will continue to provide advice and expertise, and support the country delegates, whenever requested. We are very much looking forward to the next important year of Euro-BioImaging implementation!

Euro-BioImaging is devoted to serve its users, and the imaging-based research communities in Europe at large. By providing open access to most requested imaging technologies European countries will support excellent researchers in accessing top level instruments and expertise. It was you, our Stakeholders and future users, who determined which technologies are most urgently requested (via your participation in the Euro-BioImaging Survey), that open access can be tested and validated (via your participation in the Euro-BioImaging PCS) and last but not least, that European imaging facilities are ready to open up for external users (via your participation in the 1st Open Call for Nodes). It was this continuous in depth feedback from our Stakeholders that provided the critical data needed for planning a sound and reliable infrastructure model. So today it is our turn to say a big THANK YOU to all of you, who contributed to the achievements of the Euro-BioImaging Preparatory Phase. We are proud to have such a broad supporter base and assure you that your input is reflected in the Euro-BioImaging infrastructure model and will be recognized in the future implementation process.

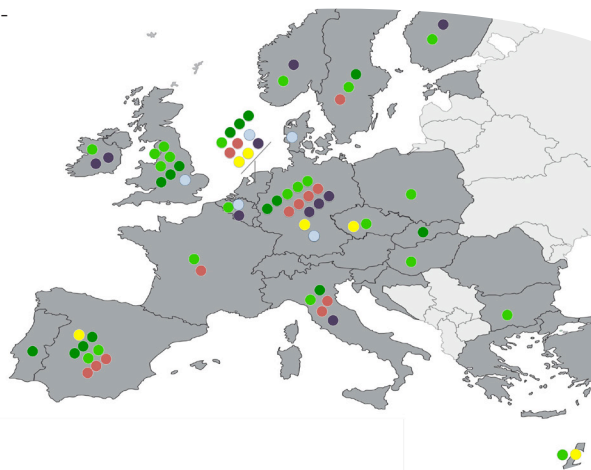
You will be kept informed about the future Euro-BioImaging activities via our project Website and a continued Newsletter service.

Enjoy the read!

Major achievements of the Euro-BioImaging Preparatory Phase

During the last three years, the Euro-BioImaging Consortium together with all partners and stakeholders developed the Euro-BioImaging infrastructure model. The key milestones and achievements on this way were:

- The survey on Europe's imaging infrastructure needs that clearly demonstrated the urgent demand for access to innovative imaging technologies and related services.
- A six-month proof-of-concept operational phase that supported 110 user research projects at 41 Euro-BioImaging partner facilities in 14 countries, and that enabled already 22 publications in high impact peer review journals, and another 20 manuscripts, which now are prepared for submission.
- The Euro-BioImaging Intergovernmental Working Group (IWG) has been established in January 2013, to prepare the constitution of the Euro-BioImaging Interim Board that will take on the responsibility for infrastructure implementation after Preparatory Phase.
- The 1st Open Call for Expressions of Interest for Euro-BioImaging Nodes that has provided detailed information on 71 national facilities interested to become Euro-BioImaging Nodes and capturing the first generation of over 2200 user research projects that Euro-BioImaging could serve. Based on the evaluation by an independent high-level international review board, the 1st generation of potential future Nodes is currently being constructed (202 million Euro have already been invested).
- The Consortium has delivered the Euro-BioImaging infrastructure model as a recommendation to the IWG.



Distribution of applications for Euro-BioImaging Nodes. Each circle represents one Expression of Interest for the Node offering following technology: Light green - ALM Multi Modal, dark green- ALM Flagship, Red- Medical Imaging, Dark purple - Molecular Imaging, Yellow- Mixture of ALM/ Molecular/Medical, Blue- Challenges Framework.

Facts & Events

5th Euro-BioImaging Stakeholder Meeting, November 25-26, 2013, EMBL, Heidelberg.

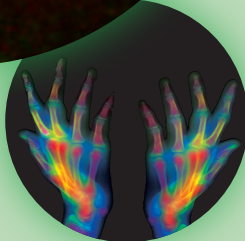
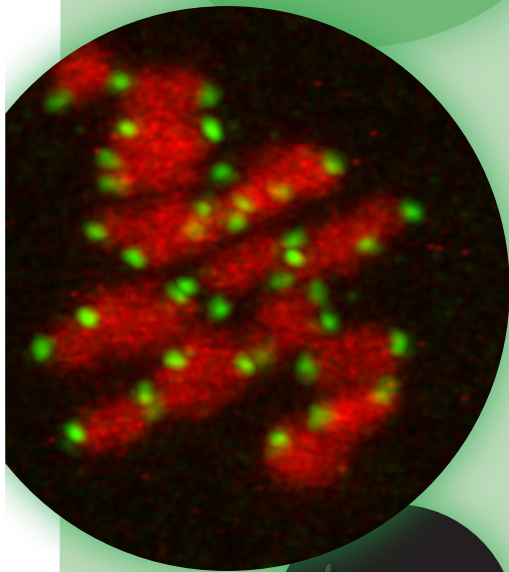
New to Euro-Biolmaging?

Euro-Biolmaging is one of 13 Biological and Medical Sciences Projects included in the roadmap of the European Strategy Forum on Research Infrastructures (ESFRI).

Euro-Biolmaging is open to everyone interested.

For more information, please visit:

www.eurobioimaging.eu



What`s next?

The construction phase of Euro-Biolmaging has already started in many countries based on national selection processes and the results of the 1st Open Call. Most potential Euro-Biolmaging Nodes already exist as imaging facilities with long standing experience in operation and user access, and required Euro-Biolmaging upgrades have been or are currently being implemented with committed financial contributions (see map). As countries are not synchronous in their national infrastructure funding cycles, the first Node construction phase can be expected to continue until 2016.

Due to the fact that many potential Euro-Biolmaging Nodes are already operational, as also amply demonstrated in the proof-of-concept studies and the international evaluation of the first open call for Nodes, it is planned to start Euro-Biolmaging operation as soon as possible to realize its added value by enabling new cutting edge science. The key steps of the Interim Phase to achieve this are the signatures of the Euro-Biolmaging legal framework and setting up the user access management at the central Euro-Biolmaging Hub.

Countries in dark-green: National investments were already made for potential Euro-Biolmaging Nodes during the preparatory phase. Information as received from national coordinating persons.

Status October 2013



Euro-Biolmaging`s impact on science, society and economy

Euro-Biolmaging will allow all European life scientists to participate in and benefit from the revolution in imaging technologies. The massively improved conditions for life scientists will open new fields to European research and fundamentally advance the molecular understanding of health and disease. Euro-Biolmaging will provide the essential imaging infrastructure to develop the innovative solutions for the grand societal challenges including health, food security, bio-economy, inclusive and innovative societies.

By opening access to the complete range of cutting-edge technologies while at the same time coordinating and sharing the costs of deployment, Euro-Biolmaging will allow its Member States a much better return on investment for biological and medical imaging platforms. Constructing the Euro-Biolmaging infrastructure with Nodes in different European regions will create new job opportunities for high potentials, including researchers, engineers, technical and managerial professionals. It will benefit the European economy by attracting the best professionals to the world-class research and technology environment created by Euro-Biolmaging. The innovative technology development environment around Euro-Biolmaging Nodes will lead to founding of new biotech and bio-optical companies across Europe that commercialize newly developed imaging technologies or provide imaging related services. In addition the competitiveness of existing companies will be increased by joint technology development with Euro-Biolmaging, new inventions and access to the innovative imaging platforms.

For further information, please contact our Project Managers:

Project Office – Advanced Light Microscopy

EMBL – European Molecular Biology Laboratory

Meyerhofstraße 1, 69117 Heidelberg, Germany

Dr. Antje Keppler, Project Manager
T +49 6221 387 8847 | keppler@embl.de

Dr. Tanja Ninkovic, Project Officer
T +49 6221 387 8480 | ninkovic@embl.de

Project Office – Medical Imaging

EIBIR – European Institute for Biomedical Imaging Research

Neutorgasse 9 A, 1010 Vienna, Austria

Dr. Pamela Zolda, Project Manager
T +43 5334064538 | pzolda@eibir.org

www.eurobioimaging.eu

