

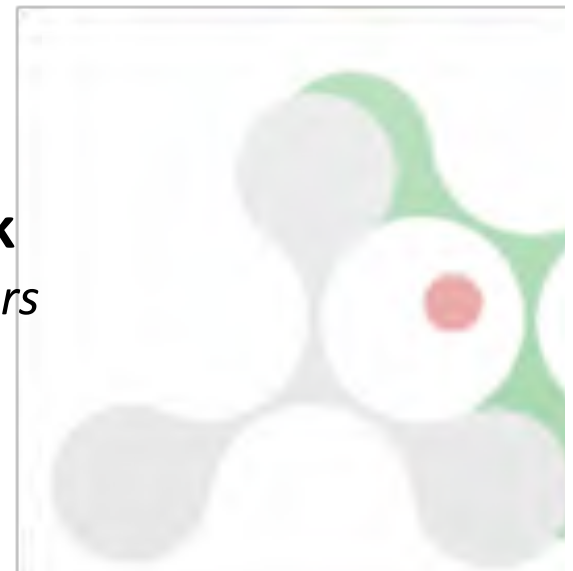
# Euro-BioImaging

**5<sup>th</sup> Stakeholder Meeting**

*November 25-26, 2013, Heidelberg*

**Jan Ellenberg and Oliver Speck**

*Euro-BioImaging Scientific Coordinators*



***Welcome***



**Monday, November 25<sup>th</sup>, 2013**

14:00	Welcome and Status Report: Oliver Speck
14:20	Importance of access to imaging research infrastructure in Europe: Karsten Specht & Judith Klumperman
15:00	<i>Coffee Break</i>
15:30	The Euro-BioImaging Operational Infrastructure and Access Model: John Eriksson
16:00	The Euro-BioImaging Hub & Nodes' Model and its Governance Structure: Antje Keppler
16:30	The Euro-BioImaging 1 <sup>st</sup> Open Call for Nodes: Pamela Zolda
17:00	Achievements of Euro-BioImaging Preparatory Phase: Jan Ellenberg
17:15	Next steps towards construction: Benny Geiger
18:00	Closing 1 <sup>st</sup> Day: Jan Ellenberg & Oliver Speck
18.30	<i>Dinner at EMBL</i>

**Tuesday, November 26<sup>th</sup>, 2013**

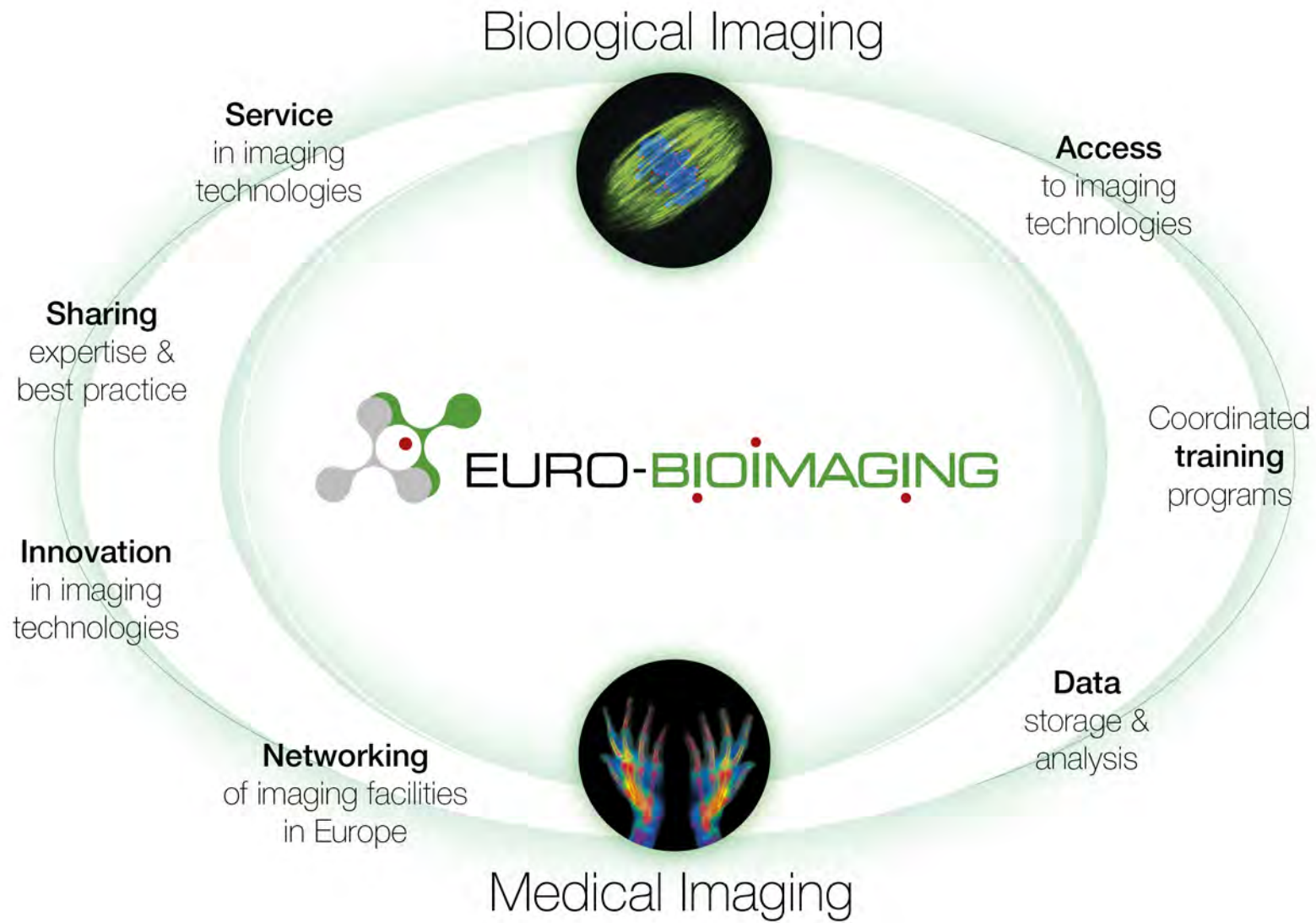
09:30	ESFRI Research Infrastructures and Horizon 2020: Ann Uustalu (European Commission)
10:00	<i>Coffee Break</i>
10:30-12:30	<p><i>Parallel Break Out Sessions on Nodes' Implementation:</i>            Joint discussion round of Node Applicants, National Coordinating Persons, Funders, Industry</p> <p>I Biological Imaging- Moderator: Rainer Pepperkok; Rapporteur: Ivan Baines            II Medical Imaging- Moderator: Silvio Aime; Rapporteur: Aad van der Lugt</p>
12:30	<i>Lunch</i>
13:30	Summary of Breakout Sessions
14:00	Résumé and Closing: Jan Ellenberg & Oliver Speck

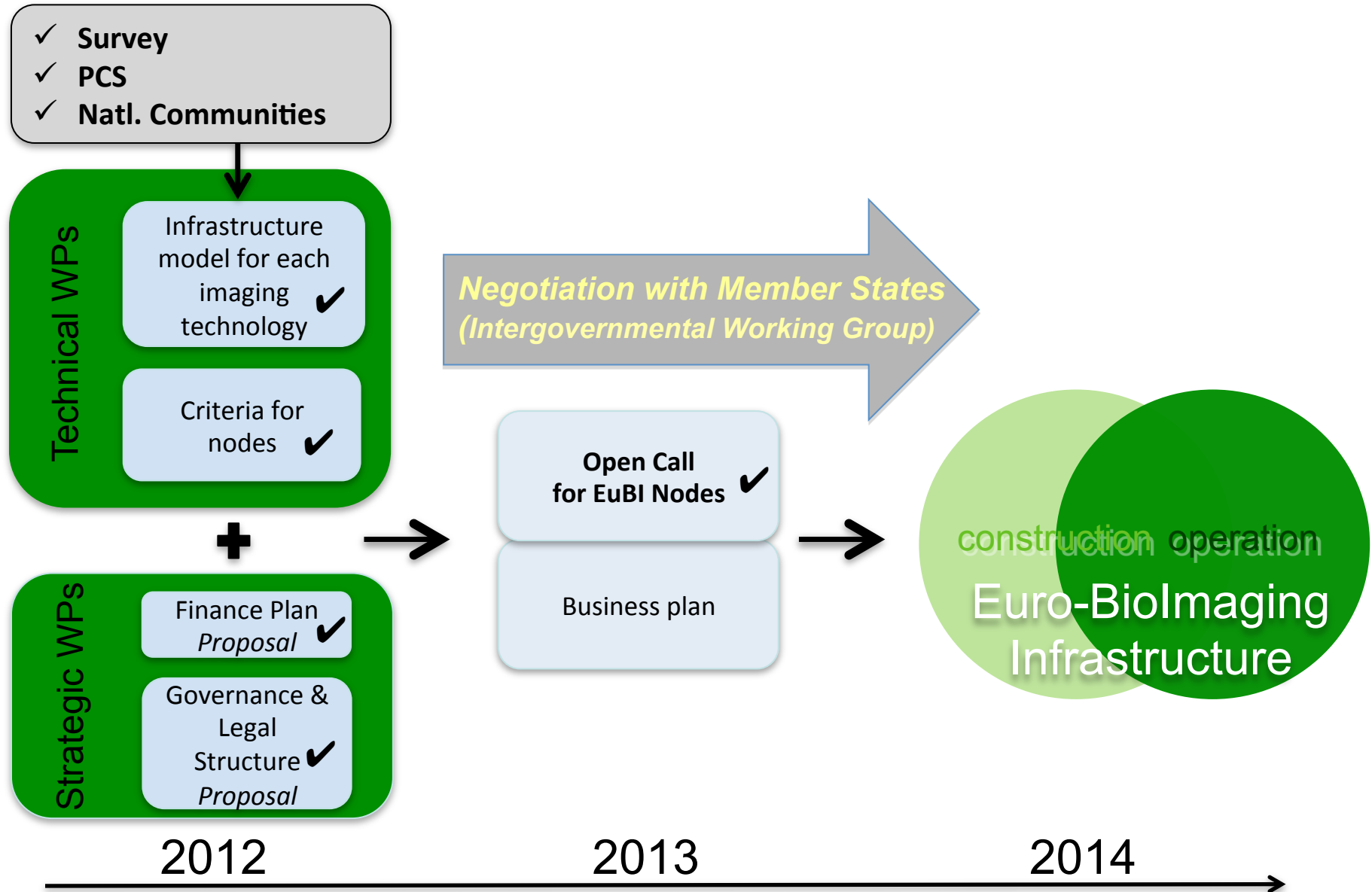


# ***Status Report***

*Oliver Speck*







### Steps towards implementation- political support

- Formation of Intergovernmental Working Group (IWG) and preparation of Interim Phase

### Final Tasks of Preparatory Phase

- 1<sup>st</sup> Open Call for Nodes
- Agreement on Governance Model by PPP Steering Committee
- Delivery of the Euro-BioImaging infrastructure model as a recommendation to the IWG
- Final Proposals for Finance Model & options for Legal Model presented to IWG

### Activities related to ESFRI

- EUBI Assessment by High Level Expert Group and Health and Food Strategic Working Group

### International Collaborations

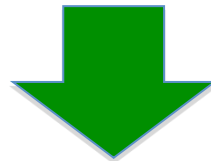
- AMMRF/Australian National Imaging Facility
- India BioImaging





Based on the recommendations from the Preparatory Phase Consortium, the **Intergovernmental Working Group (IWG)** currently discusses the final

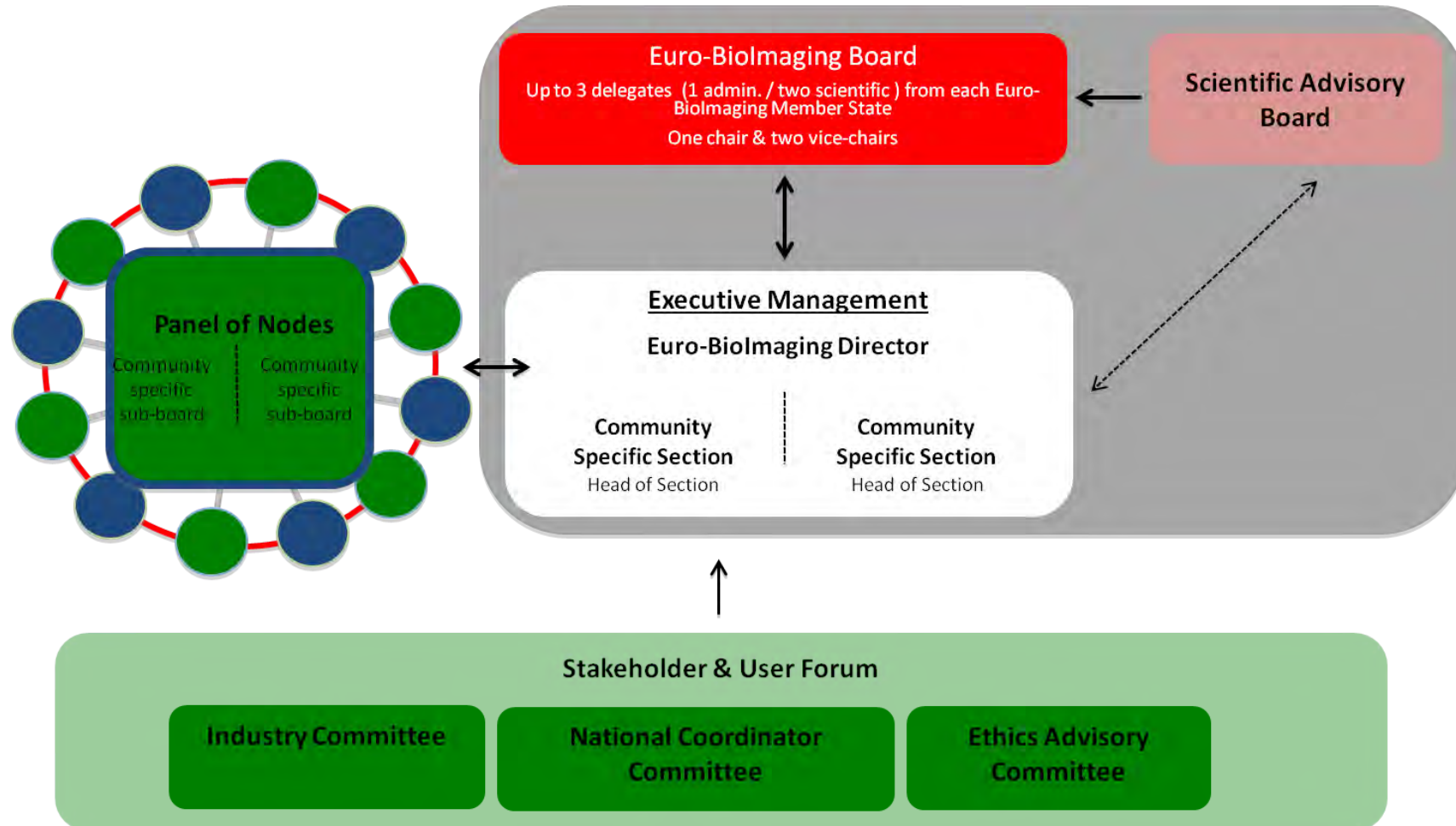
- Governance structure
- Legal model
- Finance model
- Users' access policy model

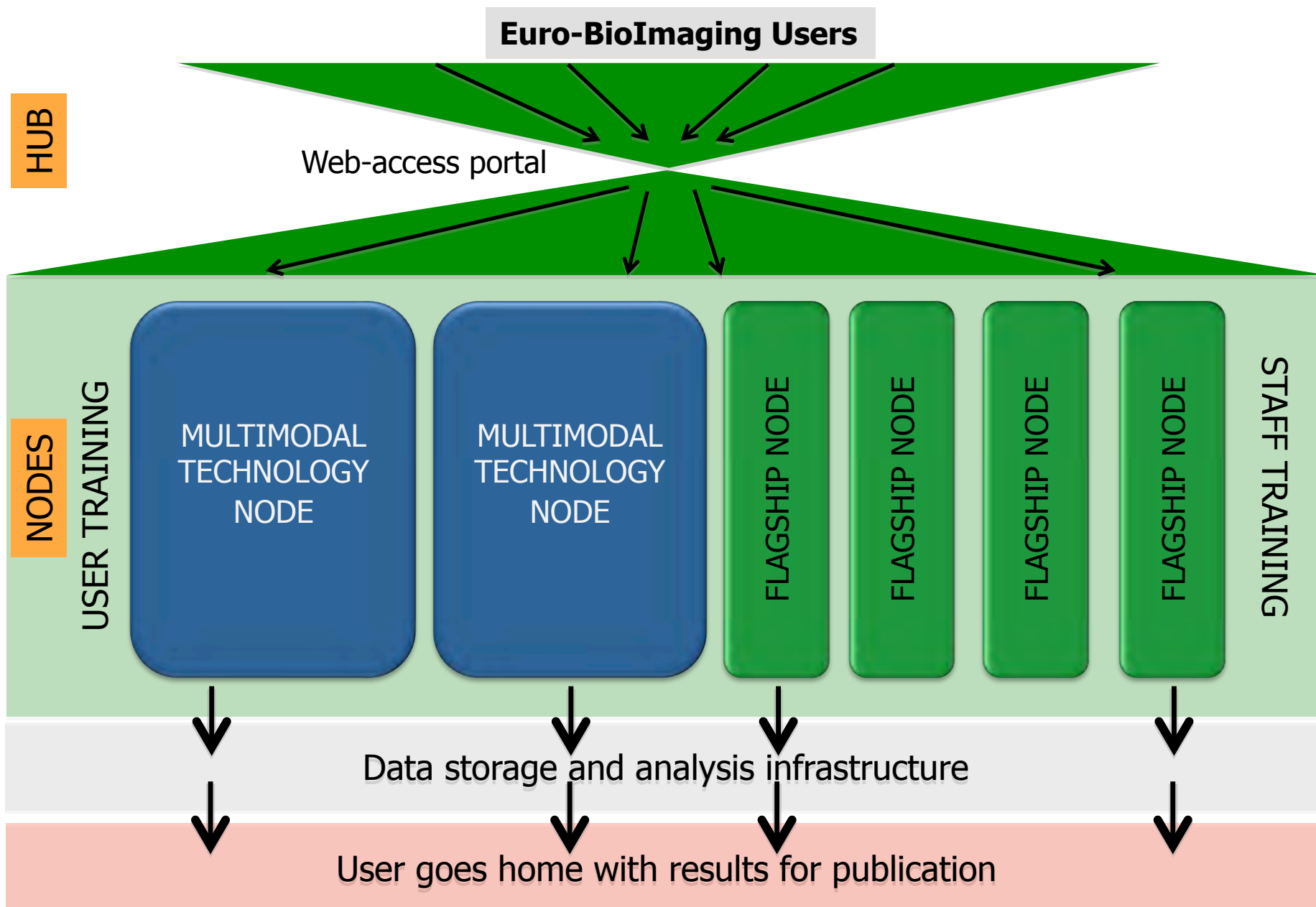


**Signature of Memorandum of Understanding**

- Imaging facilities were invited to express their interest to become Euro-BioImaging Nodes based on the set of eligibility and review criteria
- Revealed invaluable information on:
  - Service packages to be provided to Euro-BioImaging users
  - Detailed user research projects that Euro-BioImaging could serve
  - Envisaged number of users
  - User Access Costs
  - Costs (construction and operation) to provide open user access
  - User training capacity





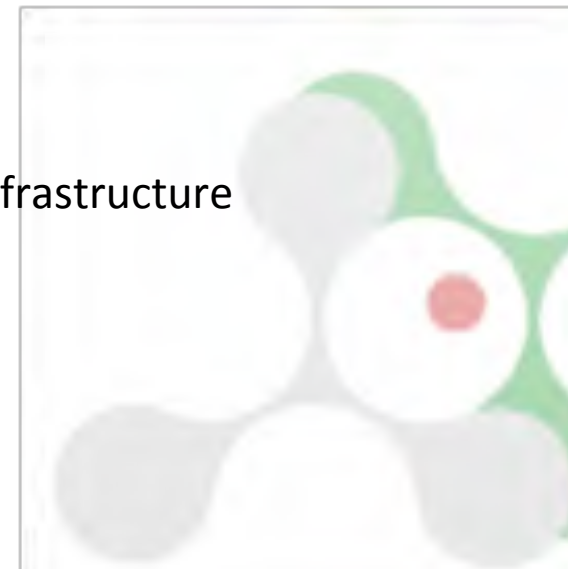


ESFRI/ASG Report and Interview in March 2013 (Status end of 2012)

Additional evaluation by *Health and Food Strategic Working Group*“ (HFSWG) in  
November 2013

Euro-BioImaging provided significant updates on:

- Governance Structure
- Involvement of Member States (MoU)
- Level of funding commitment /national investments
- Plans for construction and operation
- Hub Model and demonstration of truly distributed Research Infrastructure



## Collaboration with Australia

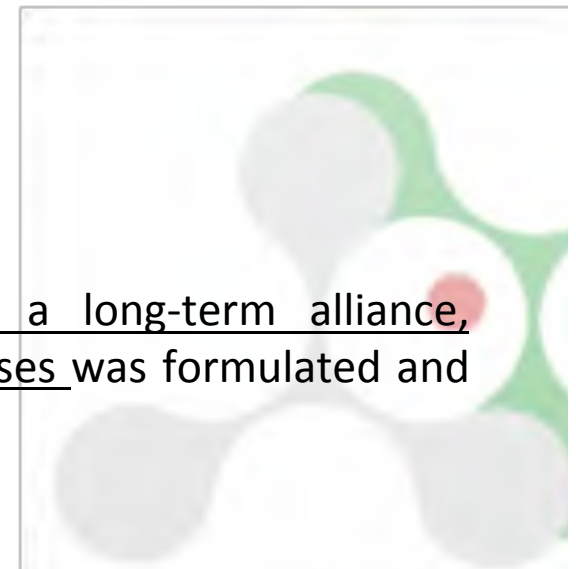
*Attendance at 3<sup>rd</sup> European Union - Australia Workshop on Research*

- Set up of Collaboration Framework between Euro-BioImaging and National Imaging Facility (NIF)
- Collaborate on developments of career paths for facility manager and service scientists based on existing collaboration agreement between Euro-BioImaging and AMMRF (renewal of agreement)

*Attendance at Workshop on “New Partnerships for Big and Complex Research”*

## Collaboration with India-BioImaging

- Attendance at 2nd Annual Meeting in Bangalore
- Collaboration Framework Agreement on establishment of a long-term alliance, exchange best practice & exchange of users for advanced courses was formulated and signed





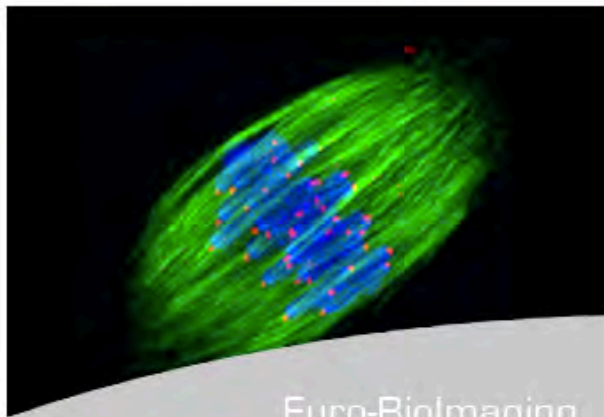
Home

Euro-BioImaging Project ↓

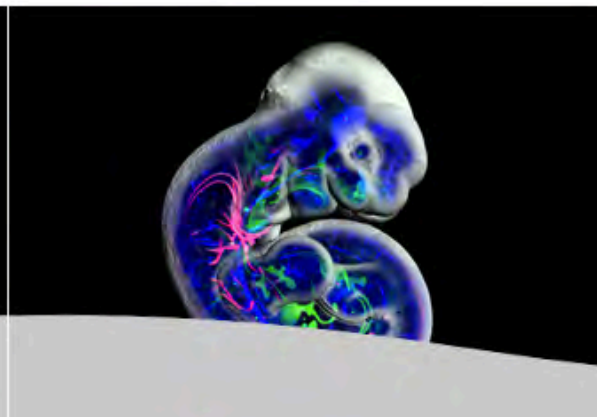
Working Groups ↓

Getting Involved

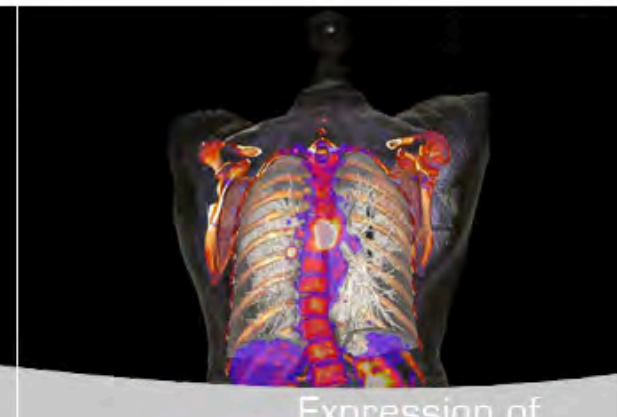
Login



Euro-BioImaging  
Project



Working Groups



Expression of  
Interest



### Biological Imaging

Jan Ellenberg (*Scientific Coordinator*)

Antje Keppler (*Project Manager*)

[keppler@embl.de](mailto:keppler@embl.de)



### Medical Imaging

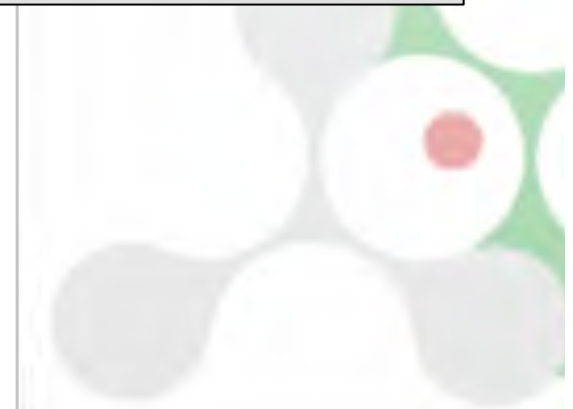
Oliver Speck (*Scientific Coordinator*)

Pamela Zolda (*Project Manager*)

[pzolda@eibir.org](mailto:pzolda@eibir.org)

# Importance of access to imaging research infrastructure in Europe

*Karsten Specht (PCS User)*  
*Judith Klumperman (PCS Provider)*





## The Euro-BioImaging infrastructure model is needed and works



### Proof-of-concept Studies:

**110 user projects at  
41 facilities in  
14 countries**

- 97% of the facilities want to participate in Euro-BioImaging
- 99% of the users would return
- 60% transnational access
- 89% of users left their home town



Access Service



EURO-BIOIMAGING  
European Research Infrastructure for Imaging Technologies  
in Biological and Biomedical Sciences

22 publications in high impact peer review journals  
20 manuscripts prepared for submission

Super resolution microscopy  
High throughput – high resolution microscopy  
Imaging  
Electron

and ... facilities in ...

From January to July 2012 the ... pan-European research ... structure project **Euro-BioImaging** ... a series of proof-of-concept ... and therefore offers FREE access ... ean advanced biological and ... cal imaging facilities.

Registrations and submission of proposals open from October 1 to November 15, 2011 on [www.eurobioimaging.eu](http://www.eurobioimaging.eu)

- MR ...
- Population ...

