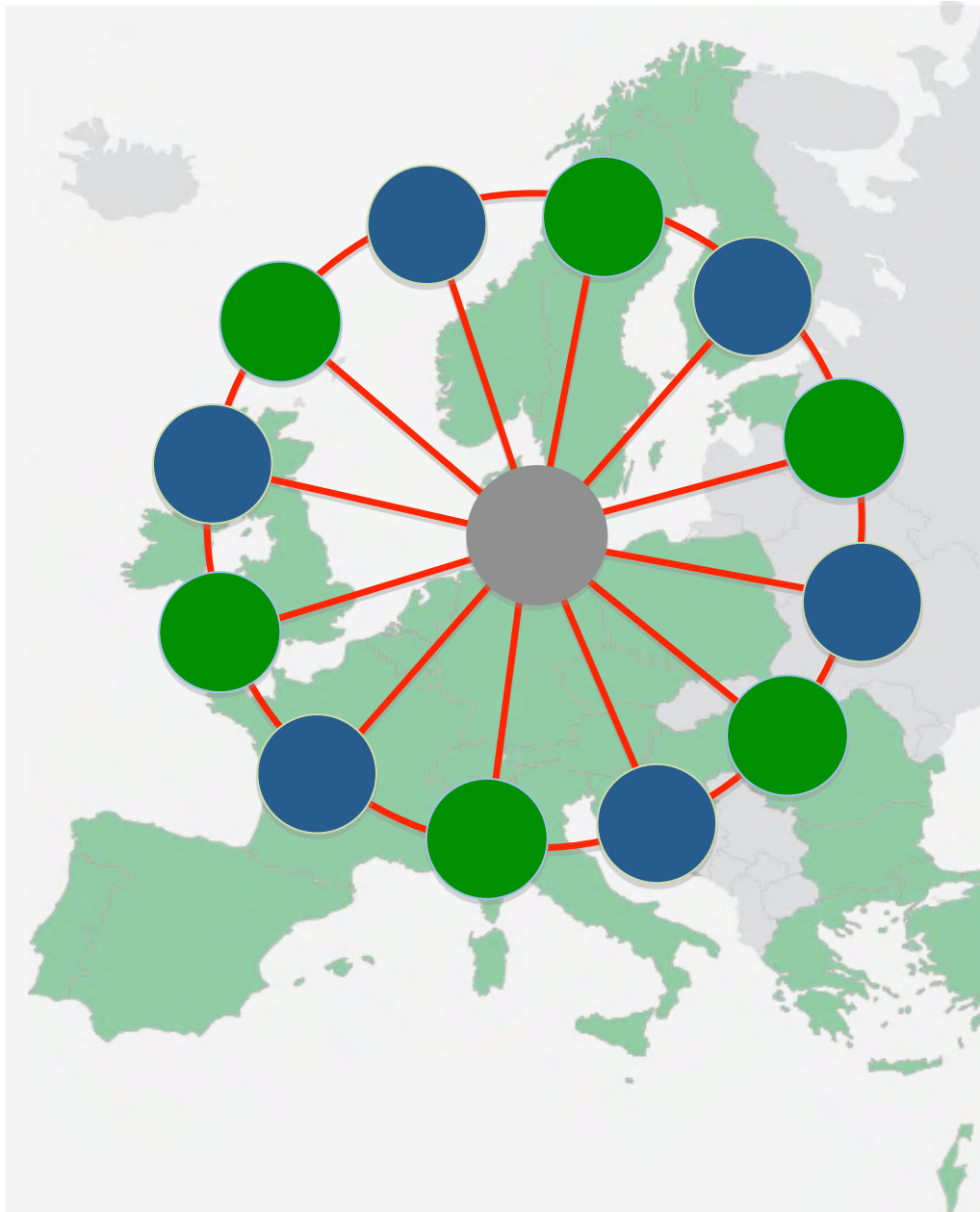

Euro-BioImaging Hub & Nodes' Model and its Governance Structure

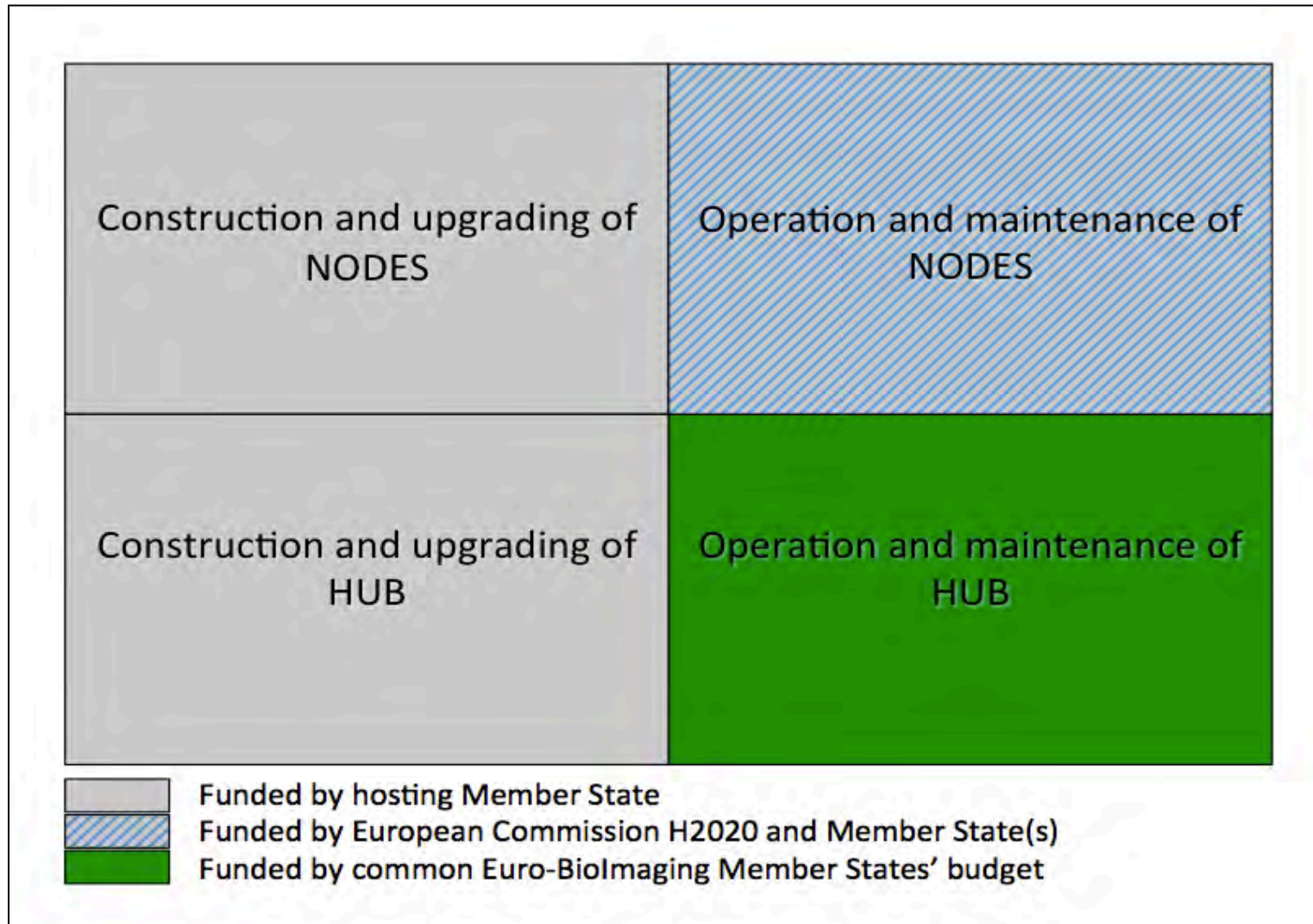
**Antje Keppler
Project Manager**

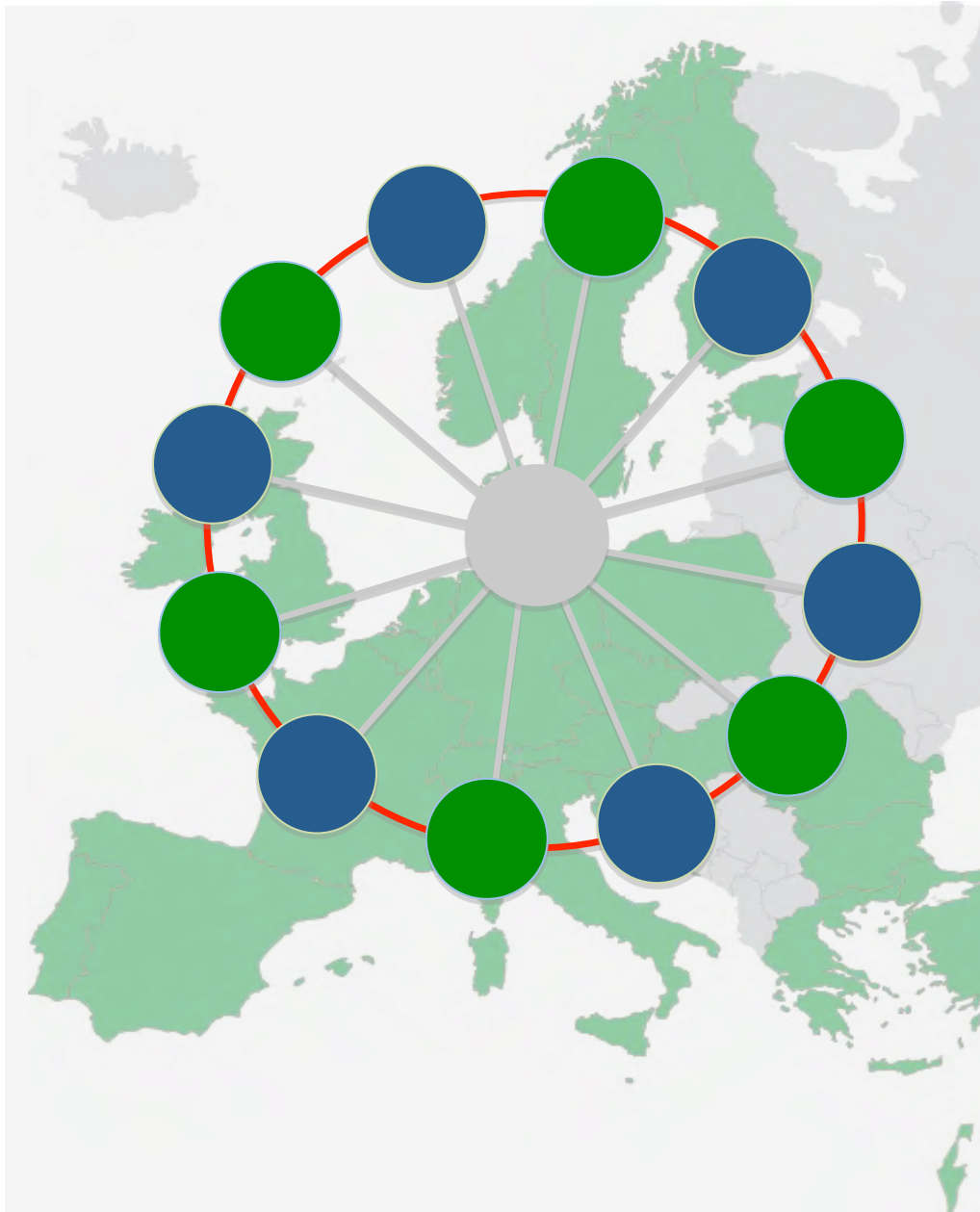


Euro-BioImaging HUB
Coordination & support of
access, data, training,
European infrastructure management

Flagship Technology NODES
Access to unique imaging technology in Europe

Multimodal Technology NODES
Integrated access to multiple imaging
technologies





Euro-BioImaging HUB
Coordination & support of
access, data, training,
European infrastructure management

Flagship Technology NODES
Access to unique imaging technology in Europe

Multimodal Technology NODES
Integrated access to multiple imaging
technologies

User access

- Evaluation of technical feasibility of user proposals
- Direct and extensive user consultation and management for project realization
- Provision of access to imaging technologies and required services**

Training

- User-training: **hands-on training** for use of instruments
- Performance of regular user training courses** (levels based on available instrumentation and expertise)

Data Management

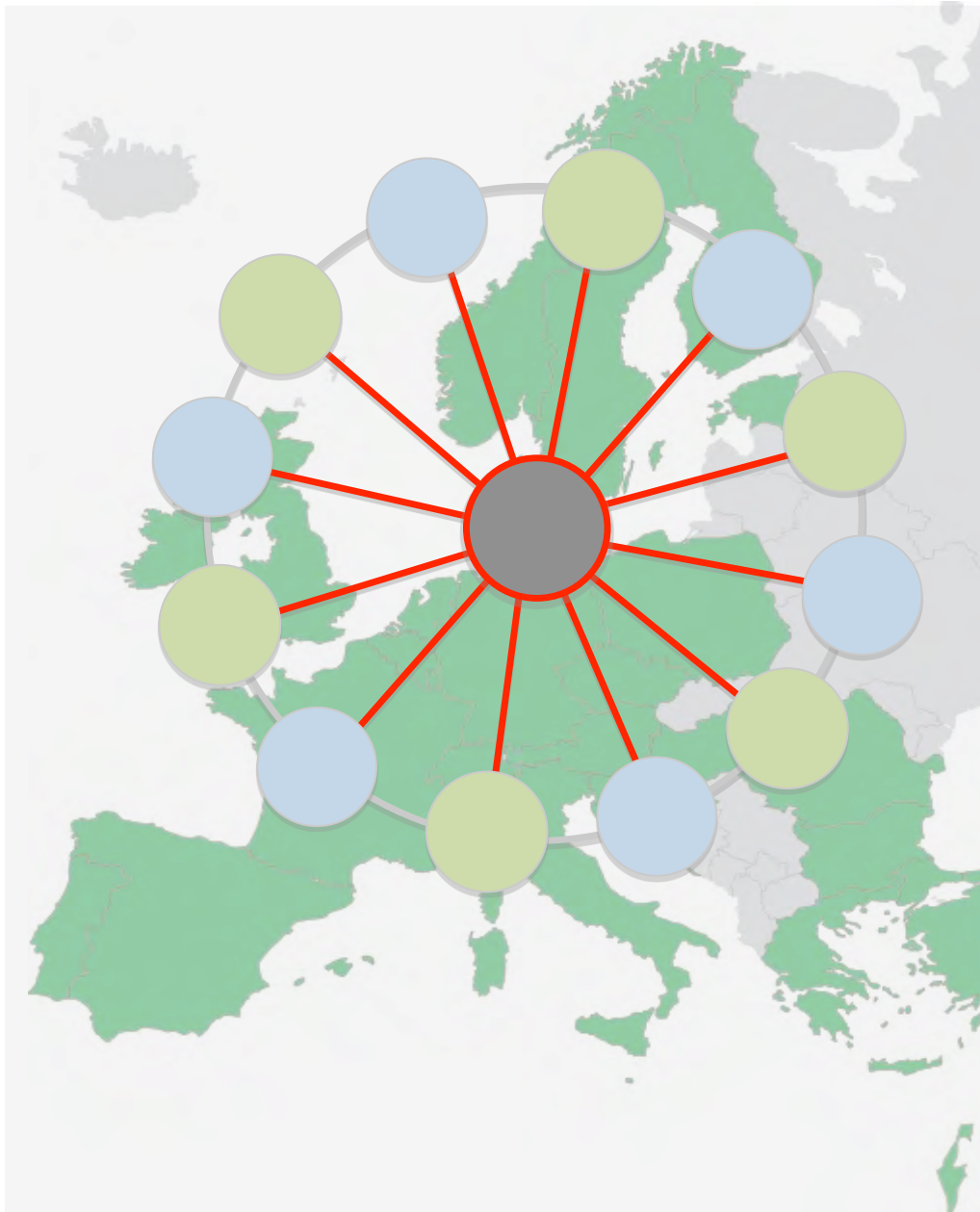
- Data storage and support for **data management and analysis and processing from users' experiments/projects**

Based on the 1st Open Call:

Projected operational and construction costs per Node (median value)
based on 65 Nodes' Expression of Interest

Type of cost	Costs
BI Node construction	€ 1.3 Mill
BI Users per Node & year	30
BI User Access costs per visit	€ 9,000
Moll Node construction	€ 6.7 Mill
Moll Users per Node & year	55
Moll User Access costs per visit	€ 13,000
MI Node construction	€ 7.2 Mill
MI Users per Node & year	22
MI User Access costs per visit	€ 62,000

Euro-BioImaging Hub



Euro-BioImaging HUB
Coordination & support of
access, data, training,
European infrastructure management

Flagship Technology NODES
Access to unique imaging technology in Europe

Multimodal Technology NODES
Integrated access to multiple imaging
technologies

User Access (@ www.eurobioimaging.eu)

- Access and consultation point for users
- Management of users (& proposals)
- Administration of scientific evaluation of user proposals

Training

- Coordination, support and advertisement
- Facility staff training
- Common repository for training material

Data Services

- Data repository
- Access to repository of tools for image data analysis
- Cloud computing services for standardized image processing

Coordination and administration

- External representation (Users, MS, funders, EC, ESFRI, stakeholders, industry, ..)
- Execution of decisions of Euro-BioImaging Board (quality assurance, evaluation, upgrade, ...)
- Support 23 (+new) national imaging initiatives
- Identifying funding opportunities
- Central administration and management framework for governance

User Access (@ www.eurobioimaging.eu)

Access and consultation point for users
Management of users (& proposals)
Administration of scientific evaluation of user proposals

Training

Coordination, support and advertisement
Facility staff training
Common repository for training material

Data Services

Data repository
Access to repository of tools for image data analysis
Cloud computing services for standardized image processing

Coordination and administration

External representation
Execution of decisions of Euro-BioImaging Board
Support 23 (+new) national imaging initiatives
Identifying funding opportunities
Central administration

Access coordinator

1 Admin. support staff

Website manager & support officer

Technology experts (Community-specific section)

Training coordinator

Admin. support staff

Data infrastructure coordinator

1 staff / common data repository

1 staff / IT infrastructure

1 staff / systems administrator

Executive Director

Heads of sections

Personal assistant

1 Admin staff

Legal advisor

External relations coordinator

Finance administrator

Public relations coordinator

User Access (@ www.eurobioimaging.eu)

Access and consultation point for users
Management of users (& proposals)
Administration of scientific evaluation of user proposals

Training

Coordination, support and advertisement
Facility staff training
Common repository for training material

Data Services

Data repository
Access to repository of tools for image data analysis
Cloud computing services for standardized image processing

Coordination and administration

External representation
Execution of decisions of Euro-BioImaging Board
Support 23 (+new) national imaging initiatives
Identifying funding opportunities
Central administration

Access coordinator

1 Admin. support staff

Website manager & support officer

Technology experts (Community-specific section)

Training coordinator

Admin. support staff

Data infrastructure coordinator

1 staff / common data repository

1 staff / IT infrastructure

1 staff / systems administrator

Executive Director

Heads of sections

Personal assistant

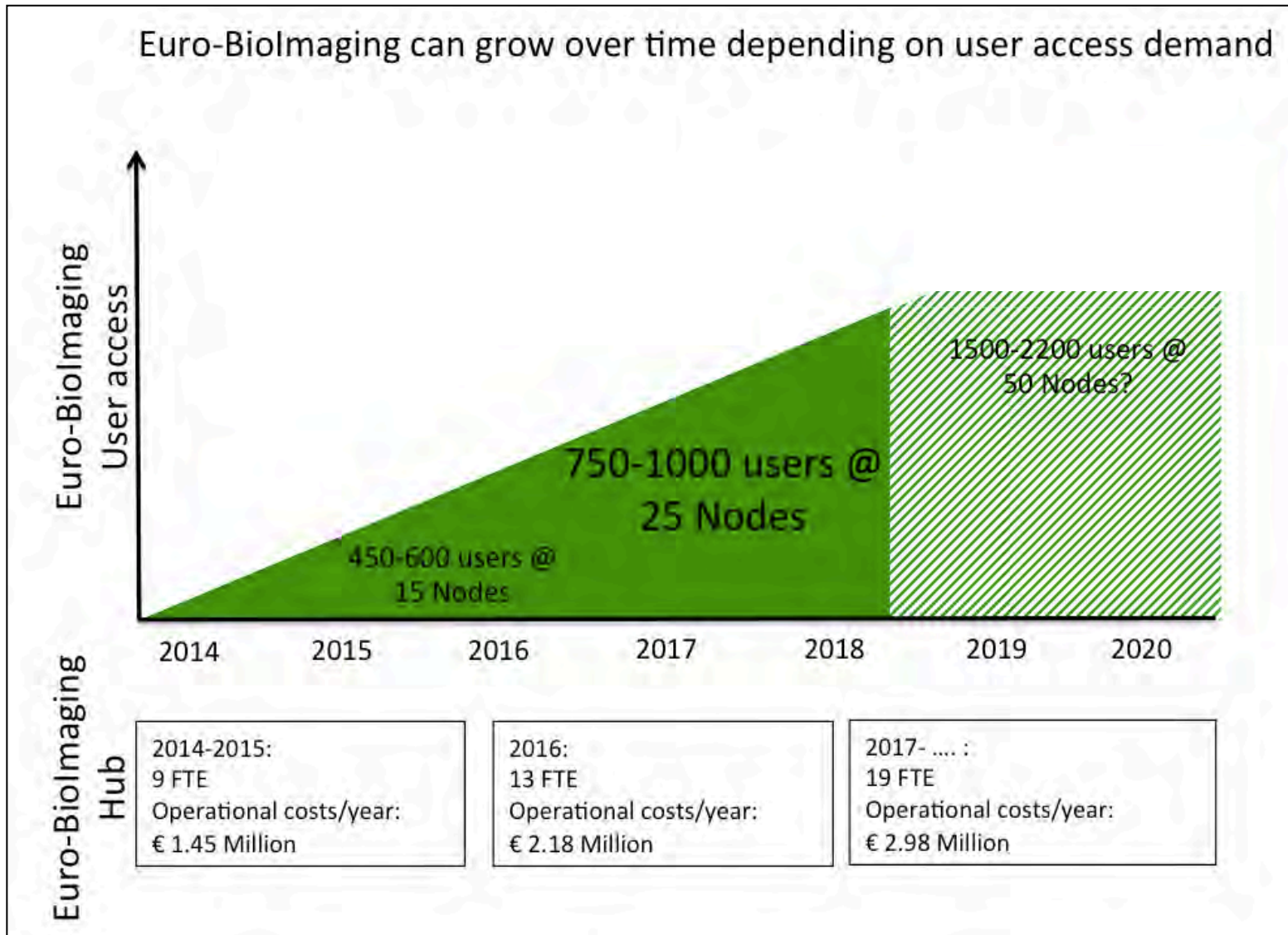
1 Admin staff

Legal advisor

External relations coordinator

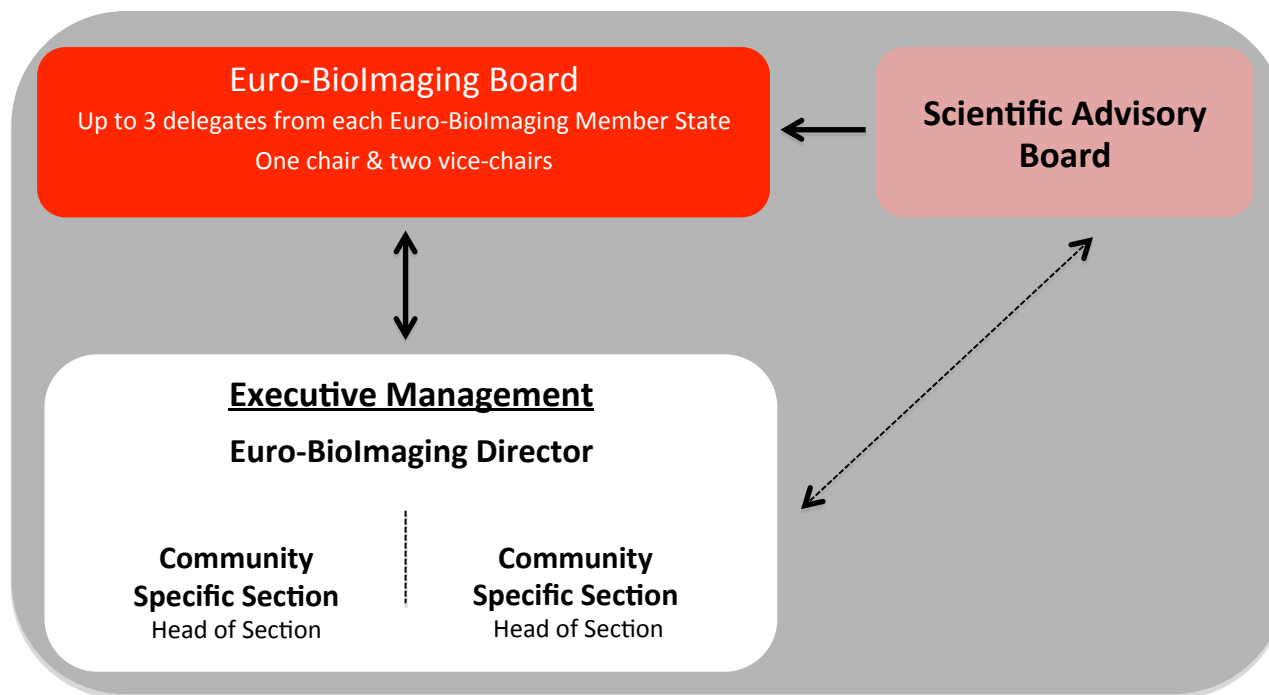
Finance administrator

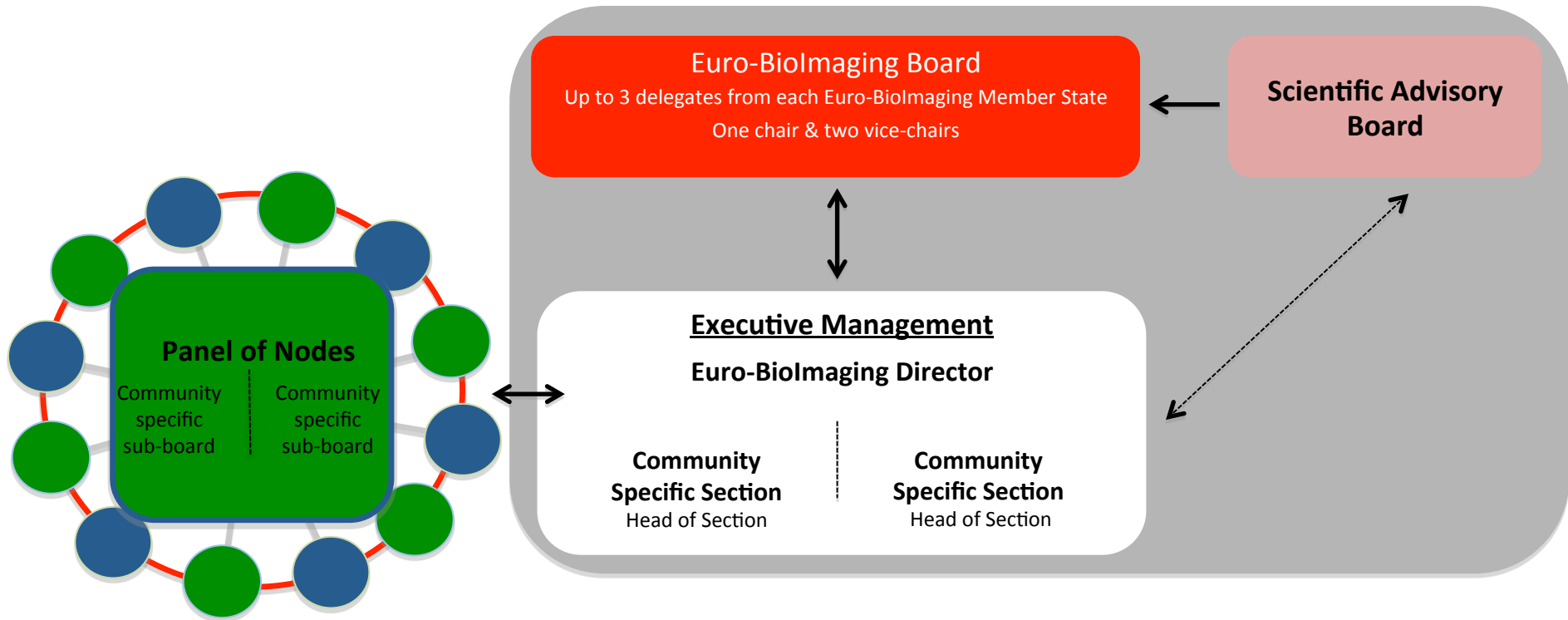
Public relations coordinator

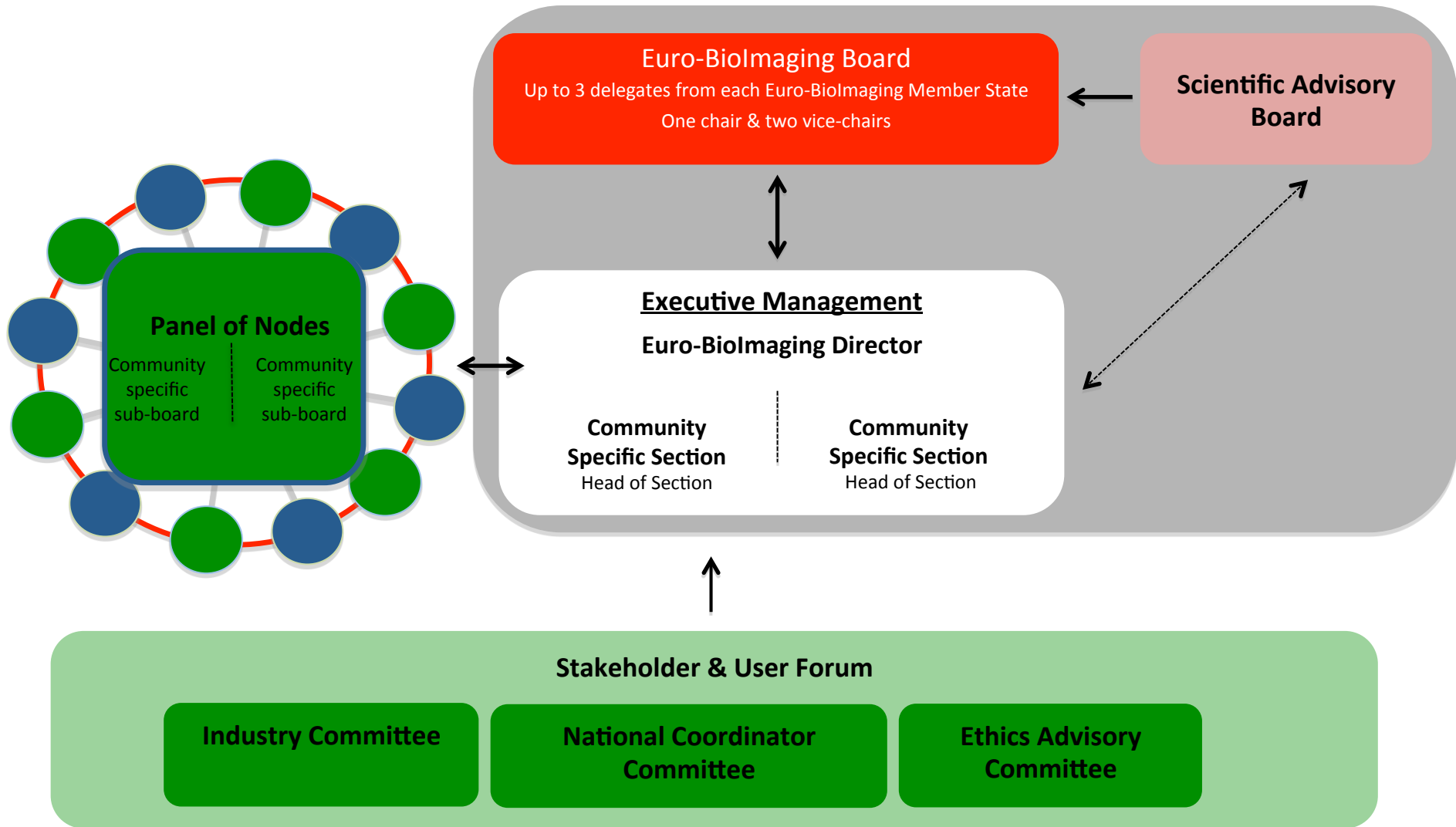


Euro-BioImaging Governance

- Newly created international organization (Euro-BioImaging Hub)
- Established, financed and governed by International Consortium of Member States
- Hub will have its own governance (*decision making, executive and advisory bodies*)
- Nodes enter into collaboration agreements with Hub
- Hub-and-Node model: *Subsidiarity principle* applied: *Hub performs tasks that cannot be performed effectively at the national and local (Node) level or that will benefit from European-level coordination*







The Euro-BioImaging Board (= **Countries**) will make all strategic decisions on:

Strategic Plan for Euro-BioImaging

Budget and estimates of future expenditures

Approve annual report submitted by Director on **performance** of the Hub and Nodes' activities (advice from SAB)

Application conditions and criteria for new Nodes

Decision on **new and exclusion** of previous **Nodes**

Appoint the Euro-BioImaging Director and Heads of Sections

Rules of procedure for the Hub

Euro-BioImaging Director

Executes the Board's decisions

Is the **legal representative** for Euro-BioImaging

Implements the strategy

Prepares a budget

Reports to Board on Euro-BioImaging's activities

Coordinates the assessment by Scientific Advisory Board of Nodes' activities

The independent **Scientific Advisory Board (SAB)** will be composed of independent and highly qualified, international scientists.

- Members will be appointed by the Euro-BioImaging Board.
- The SAB will directly advise the Euro-BioImaging Board and the Euro-BioImaging Director
- on the quality of the Euro-BioImaging activities at the coordinating Hub and the Nodes, including the evaluation of new Nodes.

Forerunner: Independent Evaluation Board

The **Panel of Nodes** comprises the Heads of Nodes.

It will interact with the Executive Management in respect to Node-related issues regarding

- update and development of imaging technologies
- related user services at the Nodes
- access policies
- data infrastructure & training activity needs at the Nodes.

Before every Euro-BioImaging Board meeting it is mandatory that the Director consults with the Panel of Nodes on the above described topics.

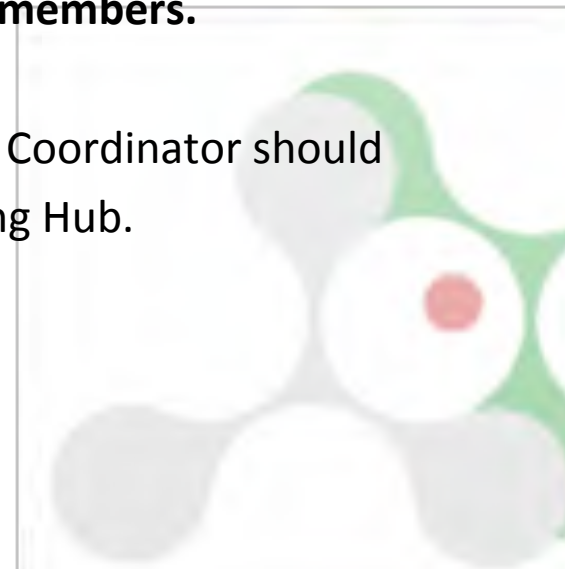


Euro-BioImaging Industry Board – EBIB

Euro-BioImaging has set up a Board of currently **over 50** Europe-based imaging companies.

EBIB plans to install an Industry Board Coordinator position, financed by annual membership fees by its members.

Physical location of EBIB Coordinator should be at the Euro-BioImaging Hub.



Thank you!

